



**India Meteorological Department  
(Ministry of Earth Sciences)**

**SPECIAL MESSAGE NO. 1 (BOB/06/2023)**

**TIME OF ISSUE:1400 HOURS IST**

**DATED:27.11.2023**

**FROM: INDIA METEOROLOGICAL DEPARTMENT (FAX NO. 24643965/24699216/24623220)**

**TO: CONTROL ROOM, NDM, MINISTRY OF HOME AFFAIRS (FAX.NO. 23093750)**

**CONTROL ROOM NDMA (FAX.NO. 26701729)**

**CABINET SECRETARIAT (FAX.NO.23012284, 23018638)**

**PS TO HON'BLE MINISTER FOR S & T AND EARTH SCIENCES (FAX NO.23316745)**

**SECRETARY, MOES (FAX NO. 24629777)**

**H.Q. (INTEGRATED DEFENCE STAFF AND CDS) (FAX NO. 23005137/23005147)**

**DIRECTOR GENERAL, DOORDARSHAN (23385843)**

**DIRECTOR GENERAL, AIR (23421105, 23421219)**

**PIB MOES (FAX NO. 23389042)**

**UNI (FAX NO. 23355841)**

**D.G. NATIONAL DISASTER RESPONSE FORCE (NDRF) (FAX NO. 26105912, 2436 3260)**

**DIRECTOR, PUNCTUALITY, INDIAN RAILWAYS (FAX NO. 23388503)**

**CHIEF SECRETARY, ODISHA (FAX NO. 0674-2536660)**

**CHIEF SECRETARY, WEST BENGAL (FAX NO. 033-22144328)**

**CHIEF SECRETARY, ANDHRA PRADESH (FAX NO. 0863-2441029, 08645-246600)**

**CHIEF SECRETARY, TAMIL NADU (FAX NO 044-25672304)**

**CHIEF SECRETARY, PUDUCHERRY (FAX NO 0413-2334145)**

**ADMINISTRATOR, ANDAMAN & NICOBAR ISLANDS (FAX NO. 03192- 232656)**

**Sub: Low Pressure Area over South Andaman Sea & adjoining Malacca Strait**

Under the influence of yesterday's cyclonic circulation over South Andaman Sea and adjoining south Thailand, a low pressure area formed over south Andaman Sea & adjoining Malacca Strait at 0830 hours IST of today, the 27th November.

It is likely to move west-northwestwards and intensify into a Depression over southeast Bay of Bengal around 29th November, 2023. Thereafter, it is likely to move northwestwards and intensify further into a cyclonic storm over southeast Bay of Bengal during subsequent 48 hours.

Pre-genesis Track & Intensity Forecasts:

<b>Date/Time (IST)</b>	<b>Position (Lat. °N/ long. °E)</b>	<b>Maximum sustained surface wind speed (Kmph)</b>	<b>Category of cyclonic disturbance</b>
27.11.23/0830	07.0/97.0	15-25 kmph gusting to 35 kmph	Low Pressure Area
27.11.23/1730	07.4/95.8	20-25 kmph gusting to 35 kmph	Low Pressure Area
28.11.23/0530	07.8/94.6	25-30 kmph gusting to 40 kmph	Well Marked Low Pressure Area
28.11.23/1730	08.2/93.3	30-40 kmph gusting to 50 kmph	Well Marked Low Pressure Area
29.11.23/0530	08.6/91.3	40-50 kmph gusting to 60 kmph	Depression
29.11.23/1730	10.2/89.4	45-55 kmph gusting to 65 kmph	Depression
30.11.23/0530	11.0/88.5	50-60 kmph gusting to 70 kmph	Deep Depression
30.11.23/1730	11.9/87.7	55-65 kmph gusting to 75 kmph	Deep Depression
01.12.23/0530	12.7/86.9	60-70 kmph gusting to 80 kmph	Cyclonic Storm

## **Warnings:**

### **(i) Rainfall Warning (graphics enclosed):**

- Light to moderate rainfall at most places with **isolated heavy rainfall** is likely over Nicobar Islands during 27<sup>th</sup> to 30<sup>th</sup> November with isolated **heavy to very heavy rainfall** on 28<sup>th</sup> and 29<sup>th</sup> November.

### **(ii) Wind warning:**

- **Andaman Sea and Andaman & Nicobar Islands:**

**Strong wind** speed reaching **15-25 kmph gusting to 35 kmph** is likely to prevail over South Andaman Sea and adjoining Andaman & Nicobar Islands, North Andaman Sea & Malacca Strait on 27<sup>th</sup> and likely to become **20-25 kmph gusting to 35 kmph** on 28<sup>th</sup> November.

- **Southeast Bay of Bengal:**

**Squally weather** with wind speed reaching **40-50 kmph gusting to 60 kmph** is likely to prevail over Southeast Bay of Bengal on 29<sup>th</sup> November. It is likely to increase becoming **50-60 kmph gusting to 70 kmph** on 30<sup>th</sup> November, **Gale Wind** speed reaching **60-70 kmph gusting to 80 kmph** on 1<sup>st</sup> December.

- **Southwest Bay of Bengal:**

**Squally wind** speed reaching **40-50 kmph gusting to 60 kmph** is likely over adjoining Southwest Bay of Bengal on 30<sup>th</sup> November & 1<sup>st</sup> December.

- **Central Bay of Bengal:**

**Squally wind** speed reaching **40-50 kmph gusting to 60 kmph** is likely over adjoining central Bay of Bengal 30<sup>th</sup> November and is likely to become **50-60 kmph gusting to 70 kmph** on 1<sup>st</sup> December.

### **(iii) Sea Condition:**

- **Andaman Sea and Andaman & Nicobar Islands:**

**Moderate to rough sea condition** is likely over South Andaman Sea and adjoining Andaman & Nicobar Islands, North Andaman Sea & Malacca Strait on 27<sup>th</sup> & 28<sup>th</sup> November.

- **Southeast Bay of Bengal:**

**Rough to very Rough** Sea condition is likely over Southeast Bay of Bengal on 29<sup>th</sup> & 30<sup>th</sup> November and **very rough to high** on 1<sup>st</sup> December.

- **Southwest and adjoining Central Bay of Bengal :**

**Rough to Very Rough to sea condition** is likely on 30<sup>th</sup> November and 1<sup>st</sup> December.

### **(iv) Fishermen Warning (graphics attached):**

Fishermen are advised not to venture into:

South Andaman Sea on 28<sup>th</sup> & 29<sup>th</sup> November.

Southeast Bay of Bengal 29<sup>th</sup> November to 1<sup>st</sup> December.

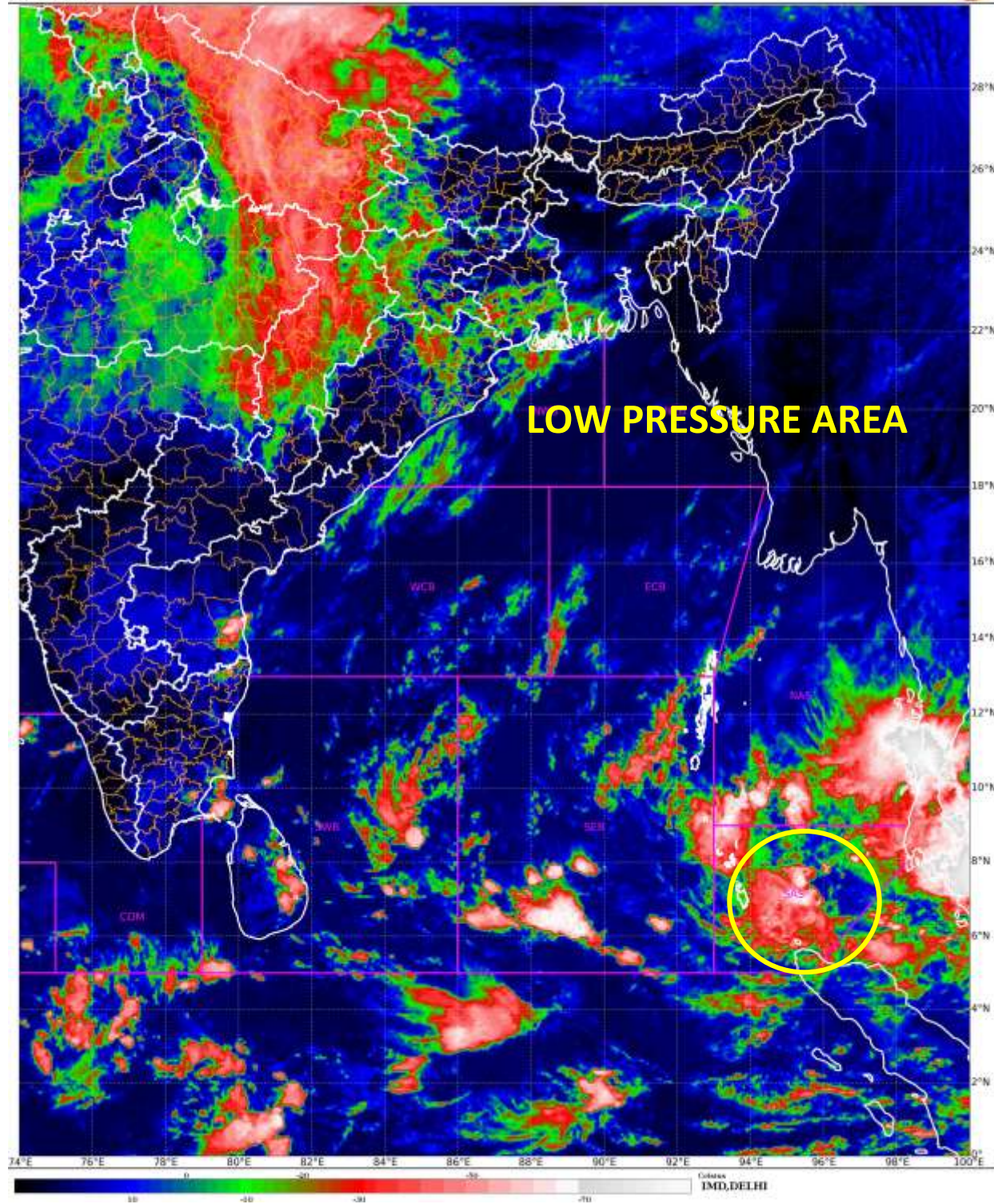
Southwest and adjoining central Bay of Bengal on 30<sup>th</sup> November and 1<sup>st</sup> December.

The Fishermen out at sea are advised to return to Islands by 27<sup>th</sup> November evening.

**The systems is under continuous surveillance and the next message will be issued at 1130 hours IST of tomorrow, the 28<sup>th</sup> November, 2023.**

**(Ananda Kumar Das)**  
**Scientist F, Cyclone Warning, New Delhi**

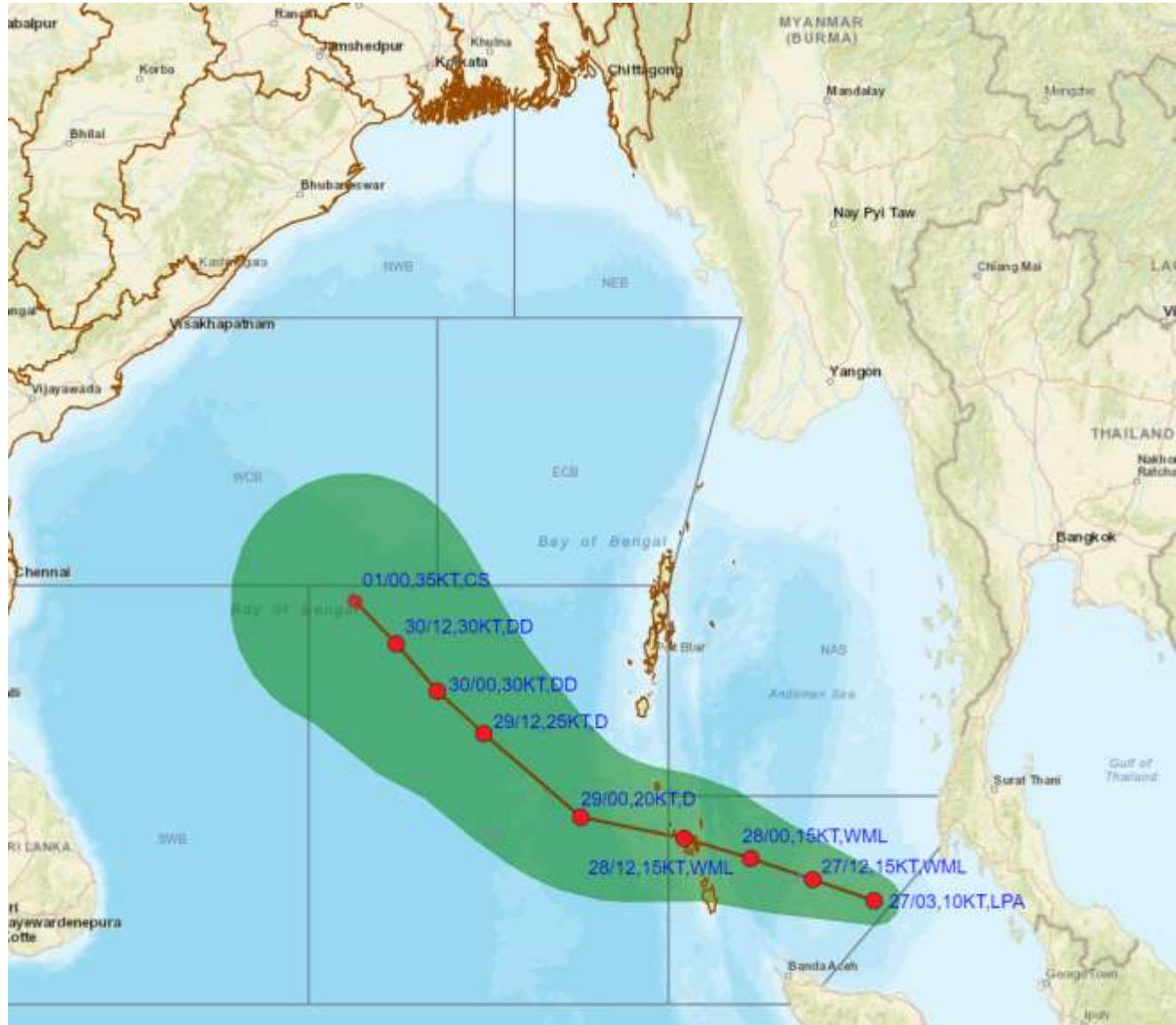
*Copy to: ACWC Mumbai/ ACWC Chennai/ ACWC Kolkata/CWC Ahmedabad/CWC Bhubaneswar/CWC Vishakhapatnam/CWC Thiruvananthapuram/MC Goa*







**PREGENESIS TRACK FORECAST ALONGWITH CONE OF UNCERTAINTY IN ASSOCIATION WITH LOW PRESSURE AREA OVER SOUTH ANDAMAN SEA AND ADJOINING MALACCA STRAIT BASED ON 0300 UTC (0830 IST) OF 27<sup>TH</sup> NOVEMBER 2023.**



DATE/TIME IN UTC

IST=UTC + 0530

L: LOW PRESSURE AREA

WML: WELL MARKED LOW PRESSURE AREA

D: DEPRESSION (17-27 KT)

DD: DEEP DEPRESSION (28-33 KT)

CS: CYCLONIC STORM (34-47 KT)

SCS: SEVERE CYCLONIC STORM (48-63KT)

VSCS: VERY SEVERE CYCLONIC STORM (64-89 KT)

ESCS: EXTREMELY SEVERE CYCLONIC STORM (90-119 KT)

SuCS: SUPER CYCLONIC STORM ( $\geq 120$  KT)

● LESS THAN 34 KT

⊙ 34-47 KT

⊙  $\geq 48$  KT

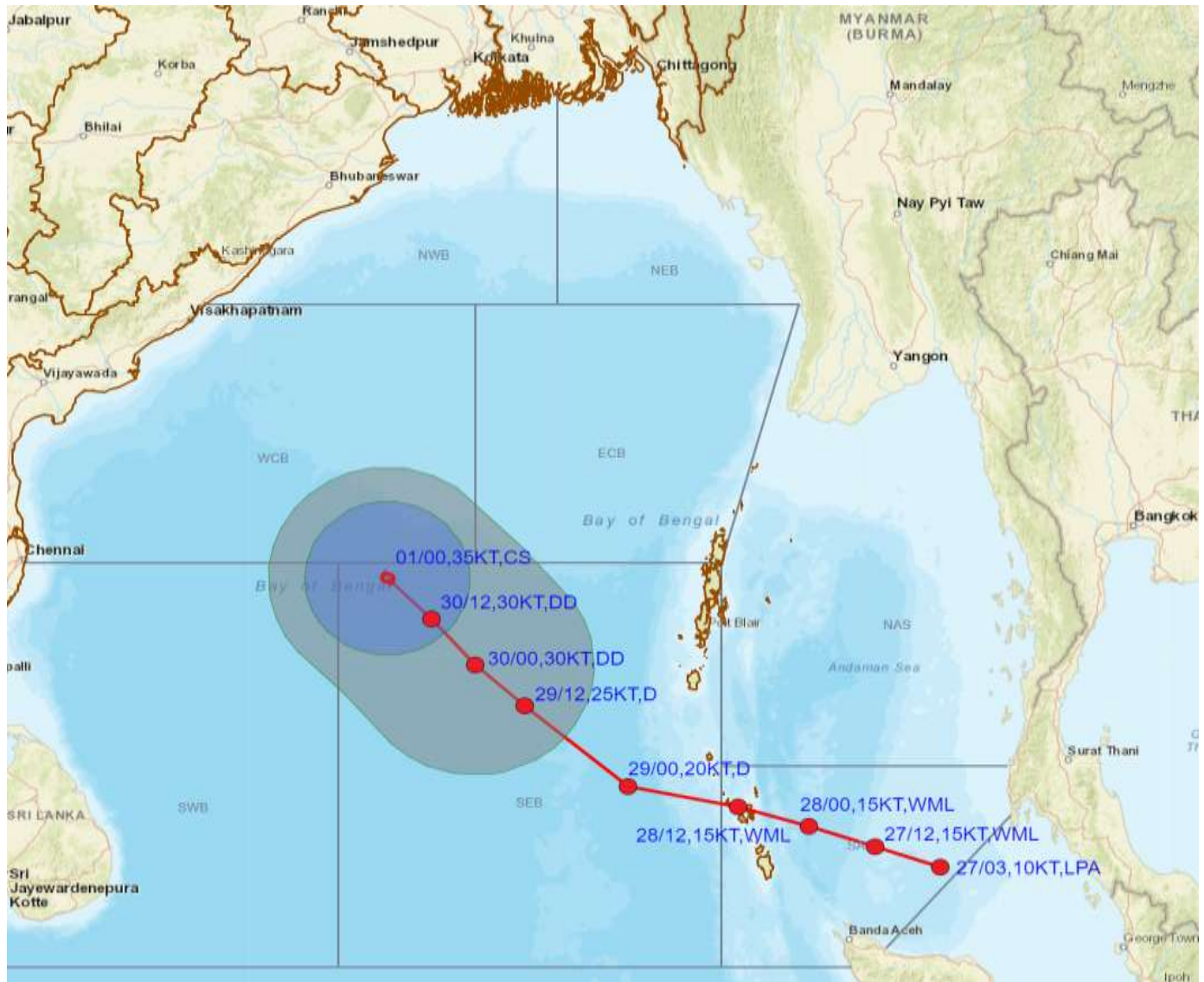
— OBSERVED TRACK

— FORECAST TRACK

▲ CONE OF UNCERTAINTY



**PREGENESIS TRACK FORECAST ALONG WITH QUADRANT WIND DISTRIBUTION IN ASSOCIATION WITH LOW PRESSURE AREA OVER SOUTH ANDAMAN SEA AND ADJOINING MALACCA STRAIT BASED ON 0300 UTC (0830 IST) OF 27<sup>TH</sup> NOVEMBER 2023.**



DATE/TIME IN UTC  
 IST=UTC + 0530  
 L: LOW PRESSURE AREA  
 WML: WELL MARKED LOW PRESSURE AREA  
 D: DEPRESSION (17-27 KT)  
 DD: DEEP DEPRESSION (28-33 KT)  
 CS: CYCLONIC STORM (34-47 KT)  
 SCS: SEVERE CYCLONIC STORM (48-63KT)  
 VSCS: VERY SEVERE CYCLONIC STORM (64-89 KT)  
 ESCS: EXTREMELY SEVERE CYCLONIC STORM (90-119 KT)  
 SuCS: SUPER CYCLONIC STORM (≥ 120 KT)

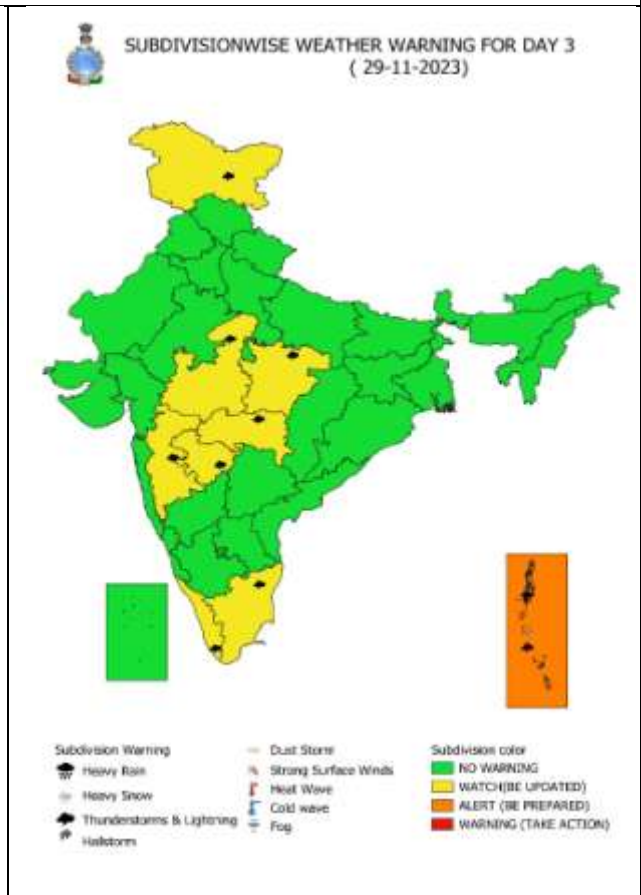
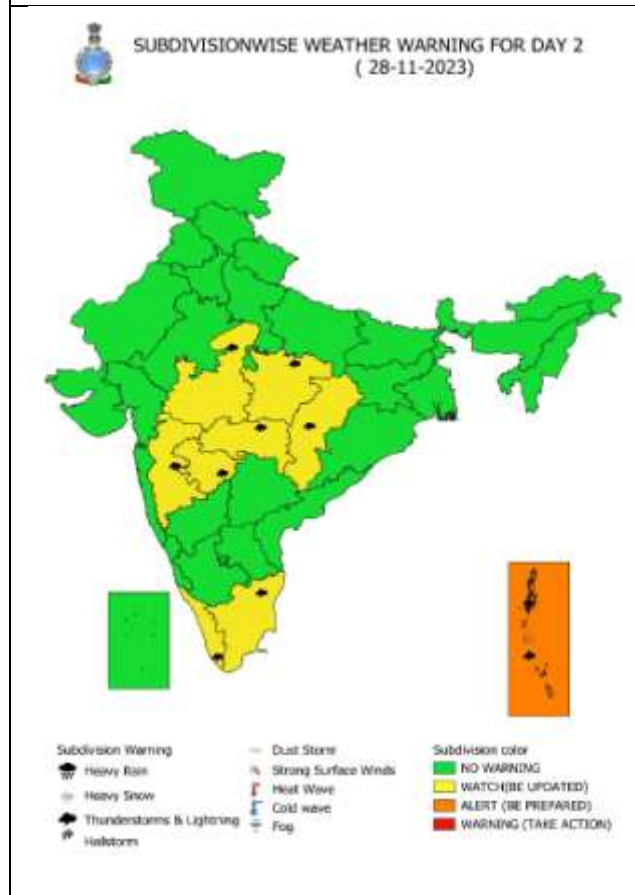
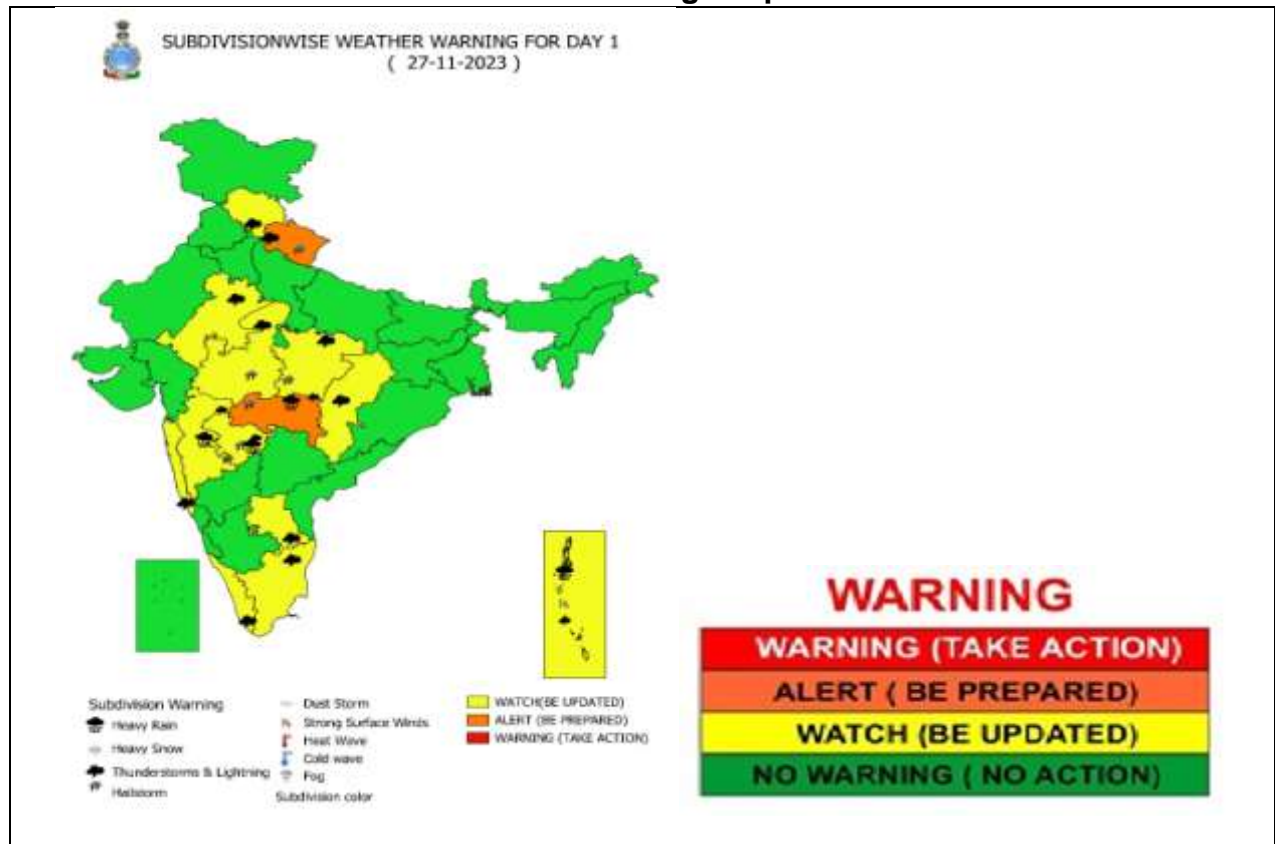
● LESS THAN 34 KT  
 ○ 34-47 KT  
 ● ≥ 48 KT  
 — OBSERVED TRACK  
 — FORECAST TRACK  
 ● CONE OF UNCERTAINTY  
 AREA OF MAXIMUM SUSTAINED WIND SPEED:  
 ■ 28-33 KT (52-61 KMPH)  
 ■ 34-49 KT (62-91 KMPH)  
 ■ 50-63 KT (92-117 KMPH)  
 ■ ≥ 64 KT (≥118 KMPH)

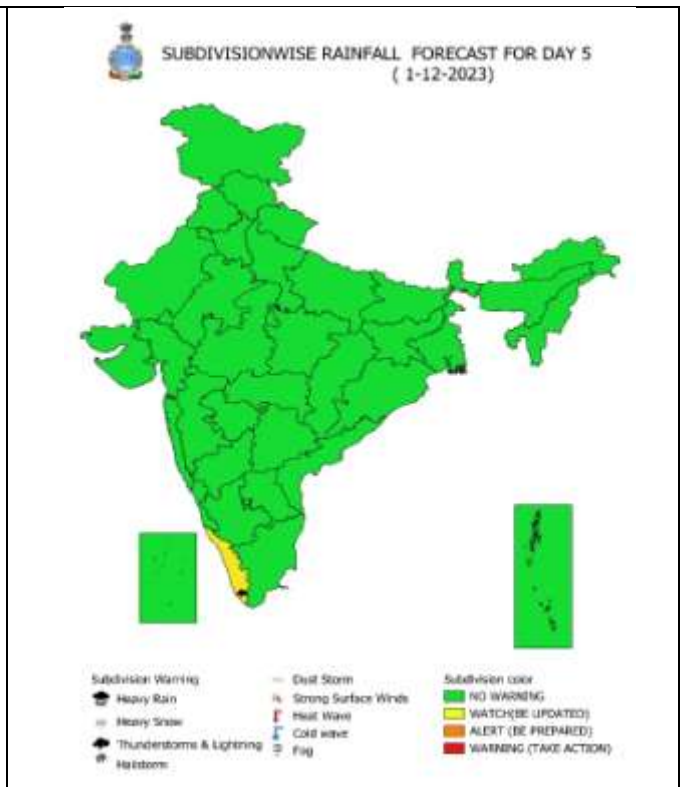
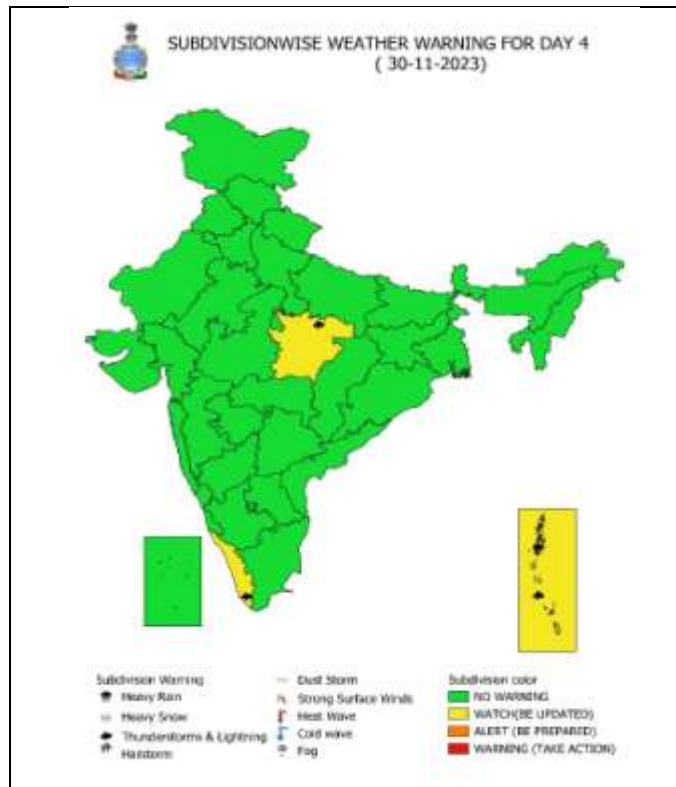
**IMPACT OVER THE SEA**

MSW (knot/kmph)	Impact	Action
28-33 (52-61)	Very rough seas	Total suspension of fishing operations
34-49 (62-91)	High to very high seas	Total suspension of fishing operations
50-63 (92-117)	Very high seas	Total suspension of fishing operations
≥ 64 (≥118)	Phenomenal	Total suspension of fishing operations



# Weather Warning Graphics





## Fishermen warning graphics

**Day 1: 27.11.2023/11:30AM to 28.11.2023/05:30AM**



**Day 2: 28.11.2023/05:30AM to 29.11.2023/05:30AM**



**Day 3: 29.11.2023/05:30AM to 30.11.2023/05:30AM**



**Day 4: 30.11.2023/05:30AM to 01.12.2023/05:30AM**



**Day 5: 01.12.2023/05:30AM to 02.12.2023/05:30AM**



	Squally WX with wind speed 40-45 kmph gusting to 55 kmph
	Squally WX with wind speed 45-55 kmph gusting to 65 kmph
	Squally wind with speed 50-60 kmph gusting to 70 kmph
	CS with Gale wind speed 60-90 kmph gusting to 110 kmph

**Fishermen are advised not to venture into the marked areas.**